



QUICK START GUIDE

SETTING UP YOUR INDUSTRIAL CONCRETE S103E SPRAYER
190448



1. Assemble Hose To Tank

IMPORTANT: Do not attempt to heat or alter hose or hose nut.

1. Align hose and screw on to tank. (See Figure A).
2. Tighten with a 5/8" wrench. (See Figure B).

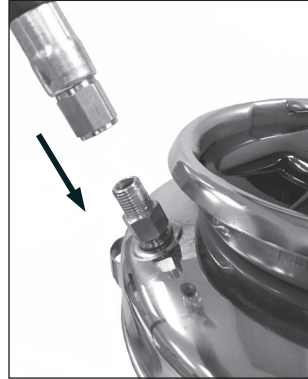


Figure A

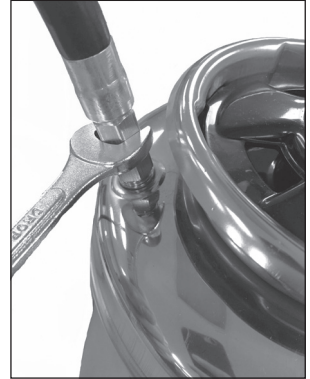


Figure B

2. Assemble Wand to Shut-off

Screw on Wand Assembly to Shut-off using a 13/16" wrench. (See Figure C)

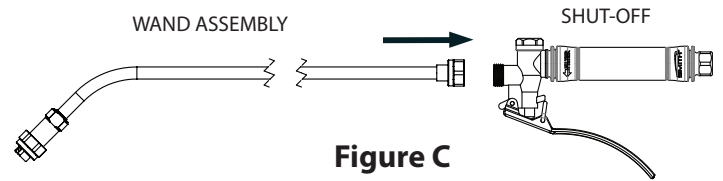
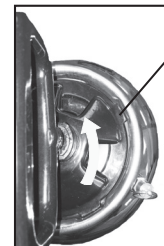
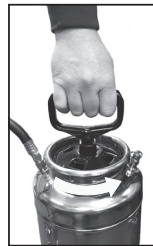


Figure C

3. Pump Unlocking and Pressurizing

TO UNLOCK PUMP: Turn handle counterclockwise until 4-prong clamp is loose, then rotate clamp counterclockwise aligning the tabs with the slots in the neck of the tank and remove the pump.

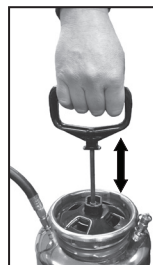


Pump Clamp Tab

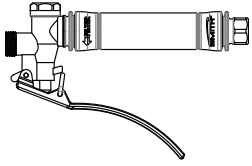
TO LOCK PUMP: Align clamp tabs with the slots in the neck of the tank and lower the pump assembly, rotate the 4-tab clamp clockwise to the stop position and rotate the handle clockwise to tighten, seal and lock the tank cover.



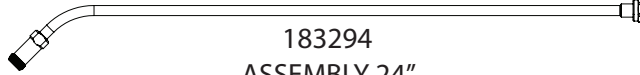
TO PRESSURIZE: Push down on the handle to depress coil spring and turn handle 1/4 turn counterclockwise to unlock handle. Pressurize the sprayer by pumping the handle in a smooth up and down motion. Push down on the handle to depress coil spring and turn handle 1/4 turn clockwise, then allow handle to raise into lock position.



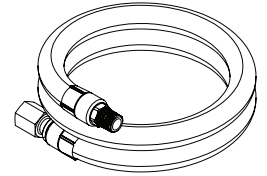
PARTS INCLUDED WITH YOUR
INDUSTRIAL CONCRETE
S103E SPRAYER
190448



183300
SHUT-OFF (VITON)



183294
ASSEMBLY 24"
BRASS WAND



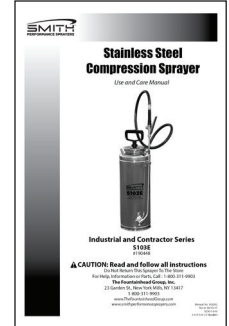
183381
HOSE 50"



182577
TIP, TEEJET BRASS
TP9505

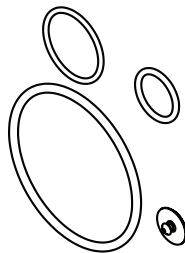


182618
WARRANTY CARD

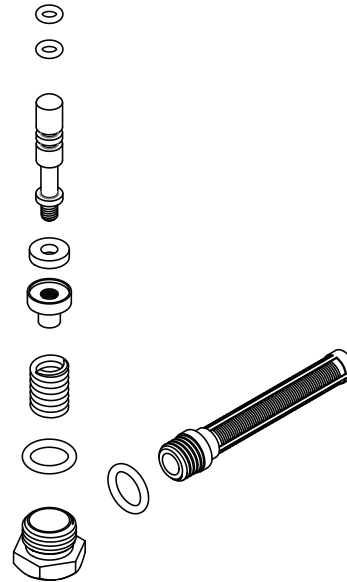


183282
MANUAL

AVAILABLE SERVICE KITS FOR YOUR
INDUSTRIAL CONCRETE
S103E SPRAYER
190448



182644 PUMP
SERVICE KIT



183525 SHUT-OFF
SERVICE KIT