

Gasket Repair Kit

#185120

(GD-124 B&G Compatible)



Gasket Repair Kit



Extenda-ban
valve



Pump lock
spring and
valve spring



Soft seat
gasket



Plunger cup, spreader
plate and grease



Check
valve



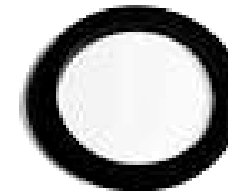
Packing
washers



Strainer
gasket



Nozzle
gasket



Pump tube gasket



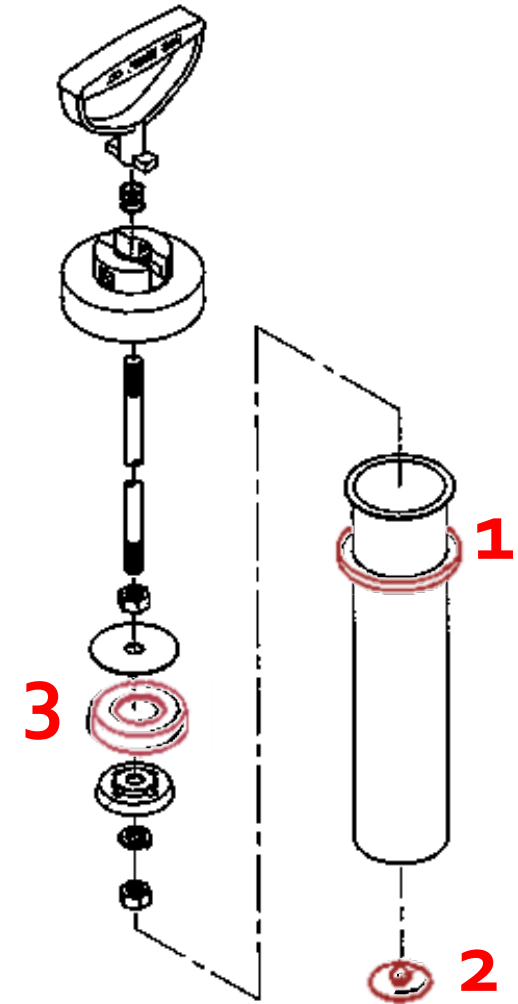
Hose
gasket

Pump Mechanism

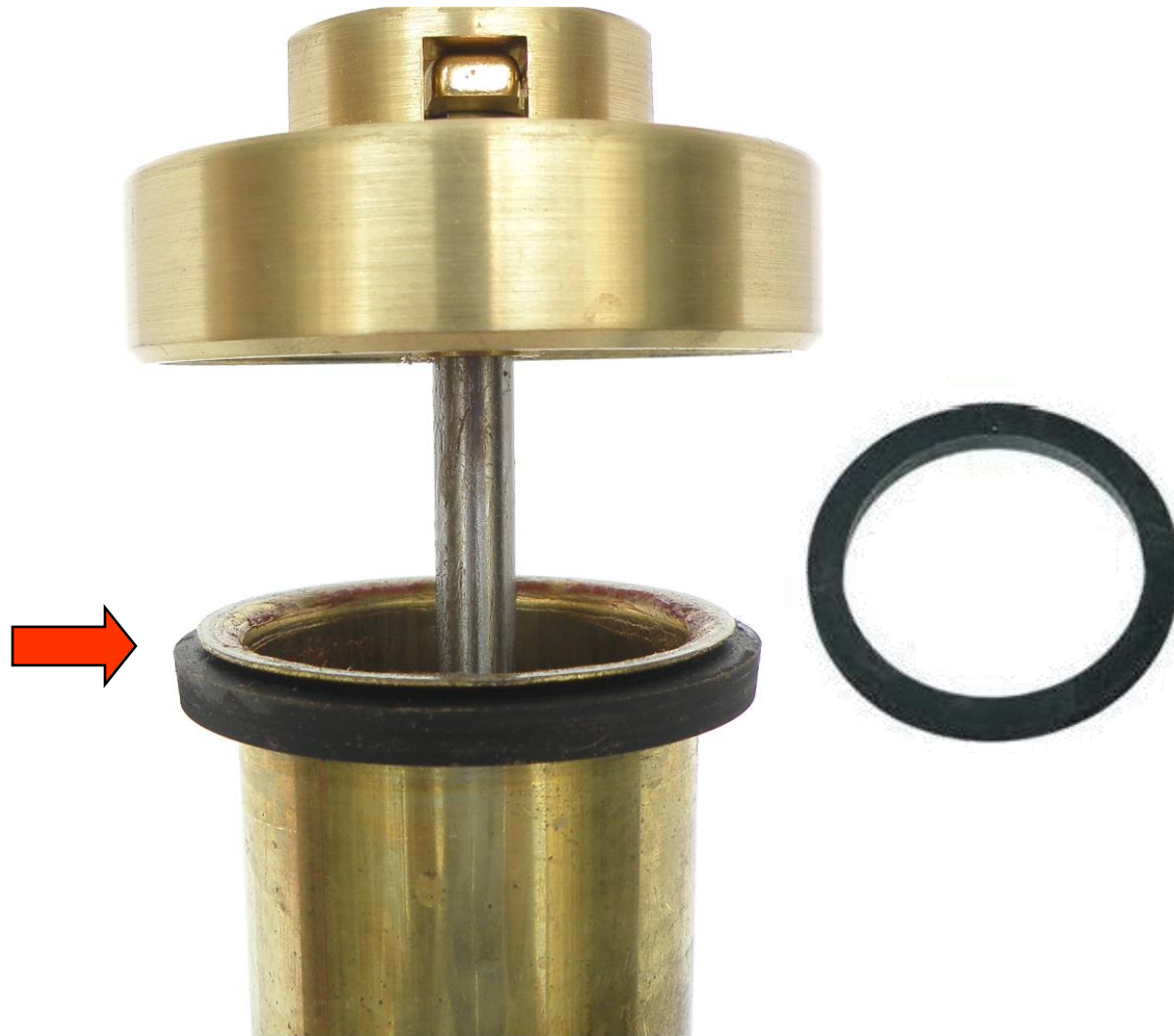
1 Pump gasket holds air pressure in the tank.

2 Check valve seals bottom of pump tube.

3 Plunger cup forces air through the pump tube into the tank.



Pump Tube Gasket



Inspect the pump tube gasket when tank pressure frequently drops after pumping. Replace gasket when swollen or cracked.



Plunger Cup

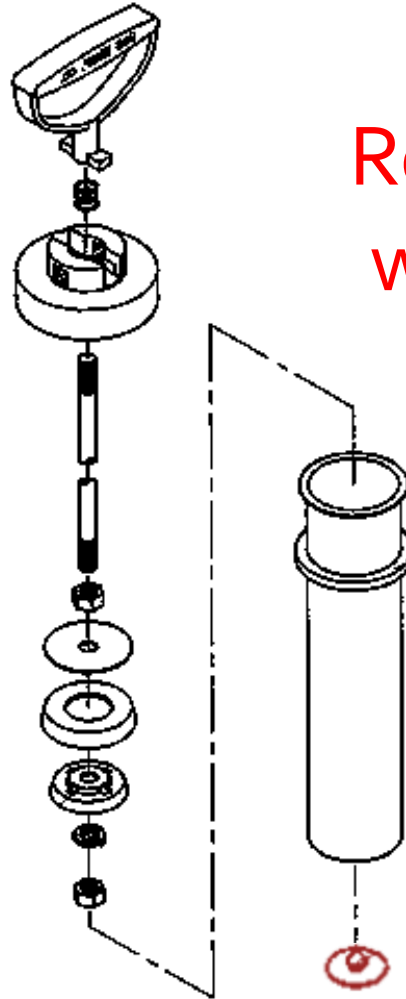
Replace plunger cup every 2 years and install a new pressure plate with new cup.



Pump Mechanism



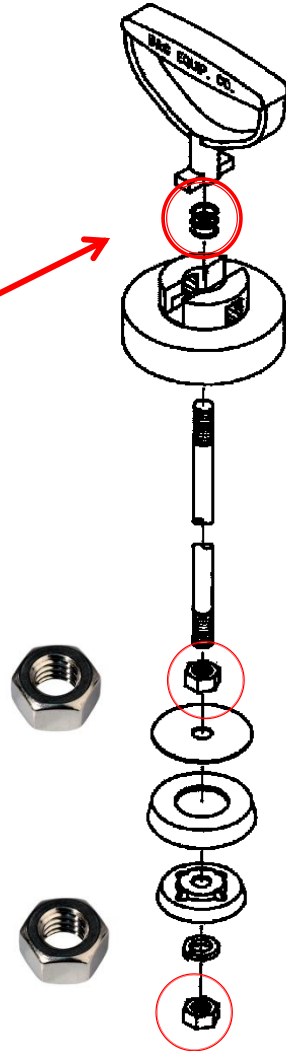
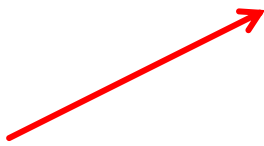
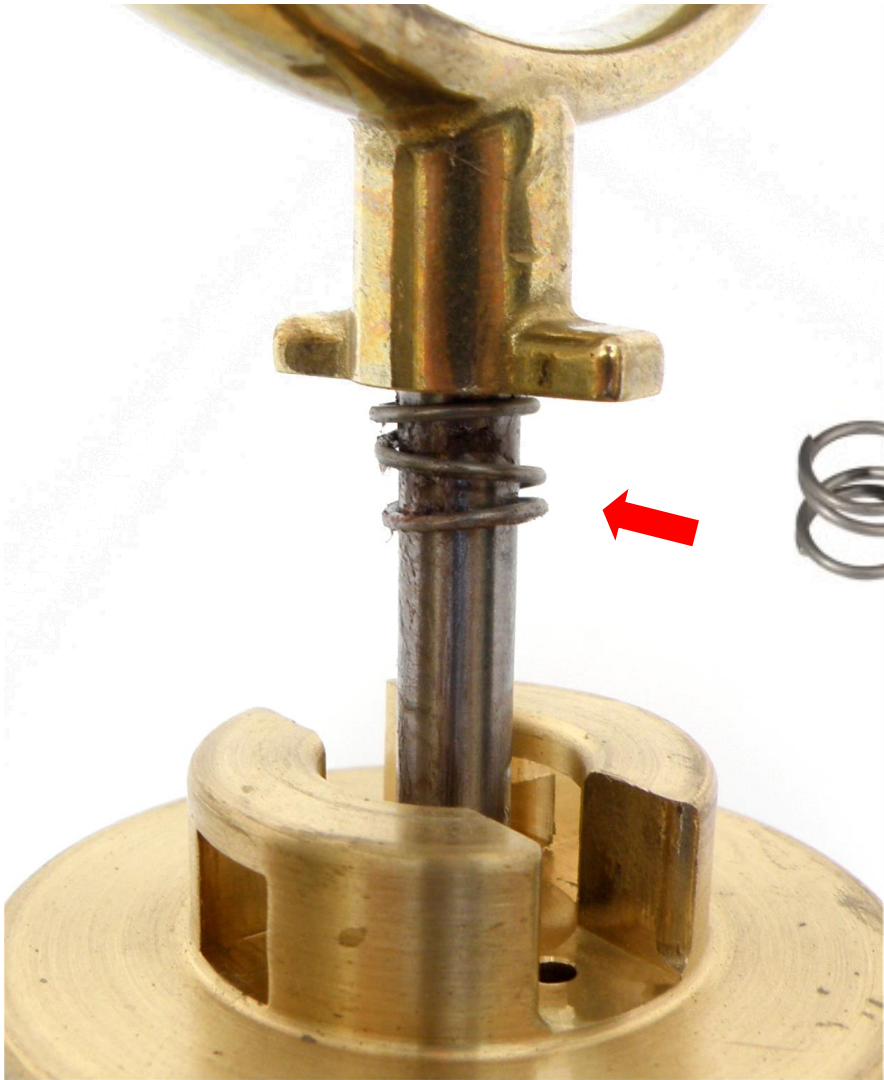
Clean holes in pump tube only with **nylon** brush.



Replace check valve when plunger tube fills with liquid.



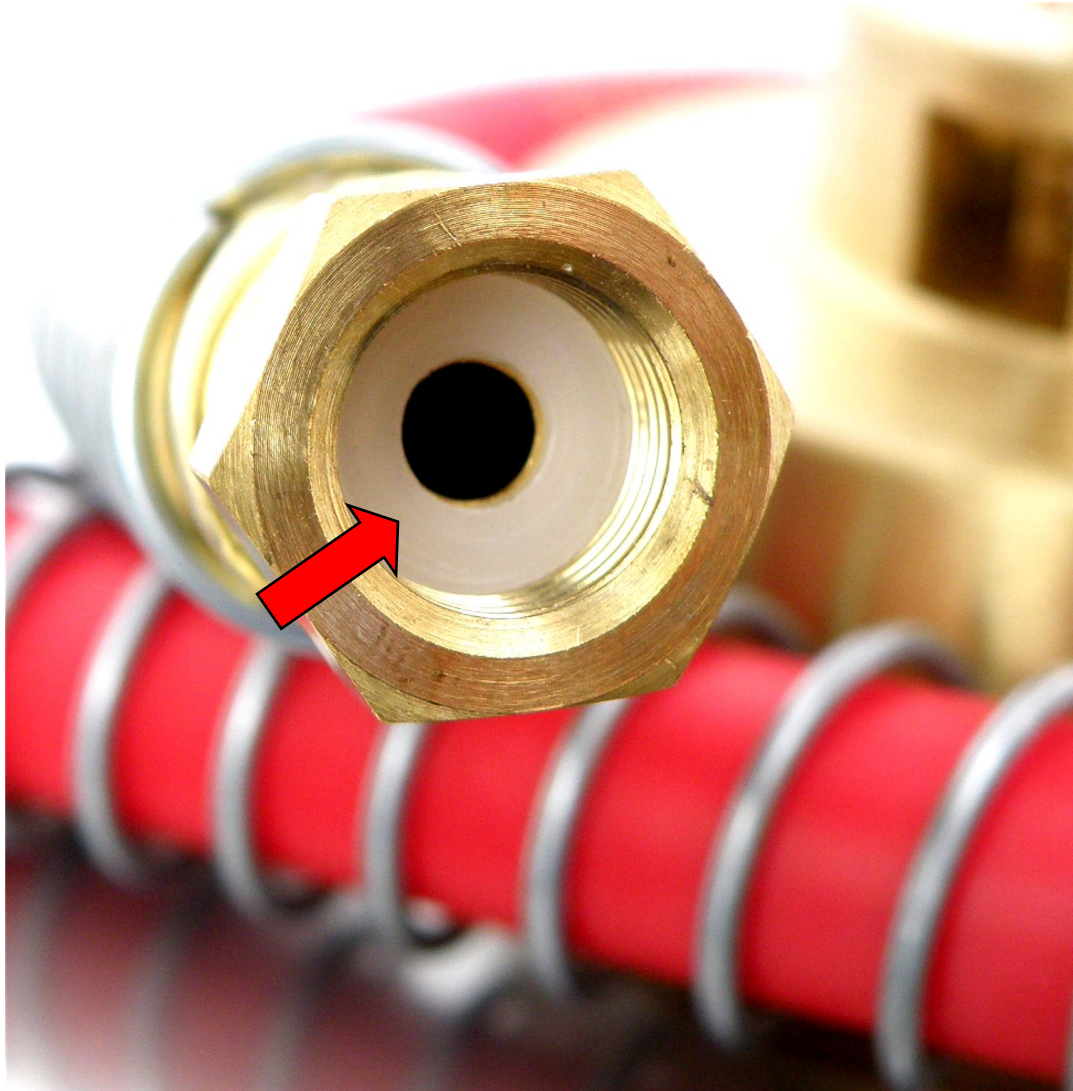
Pump Lock Spring



Replace pump lock spring when plunger cup is replaced.



Hose Gasket

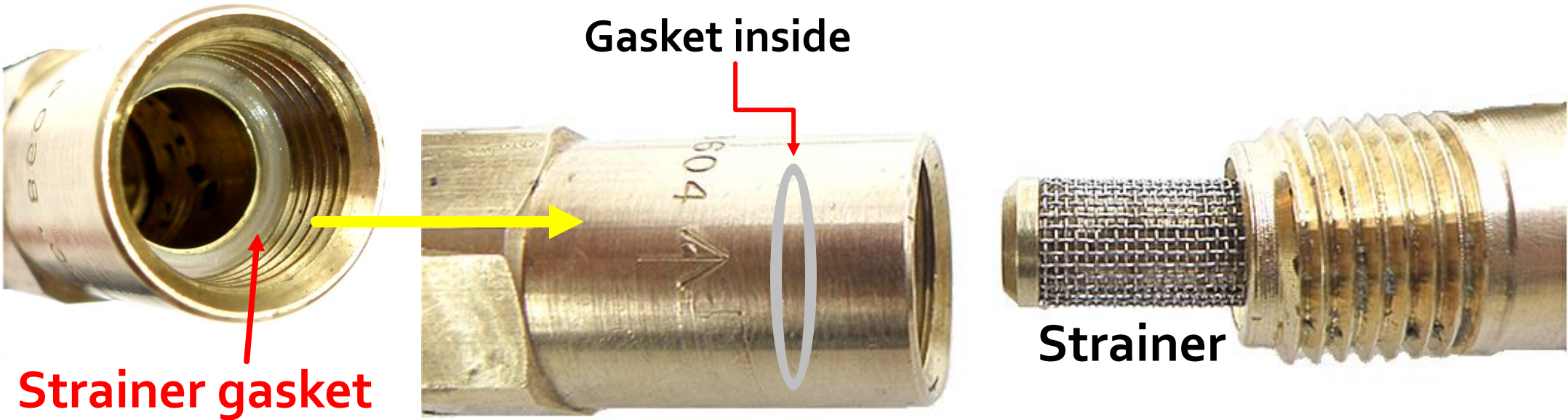


When hose is attached too tight the gasket opening closes and flow of liquid is blocked.

Damaged gasket must be replaced. Nylon gasket will not return to original shape.



Strainer Gasket



Insert gasket into brass hose fitting.



Nozzle Gasket

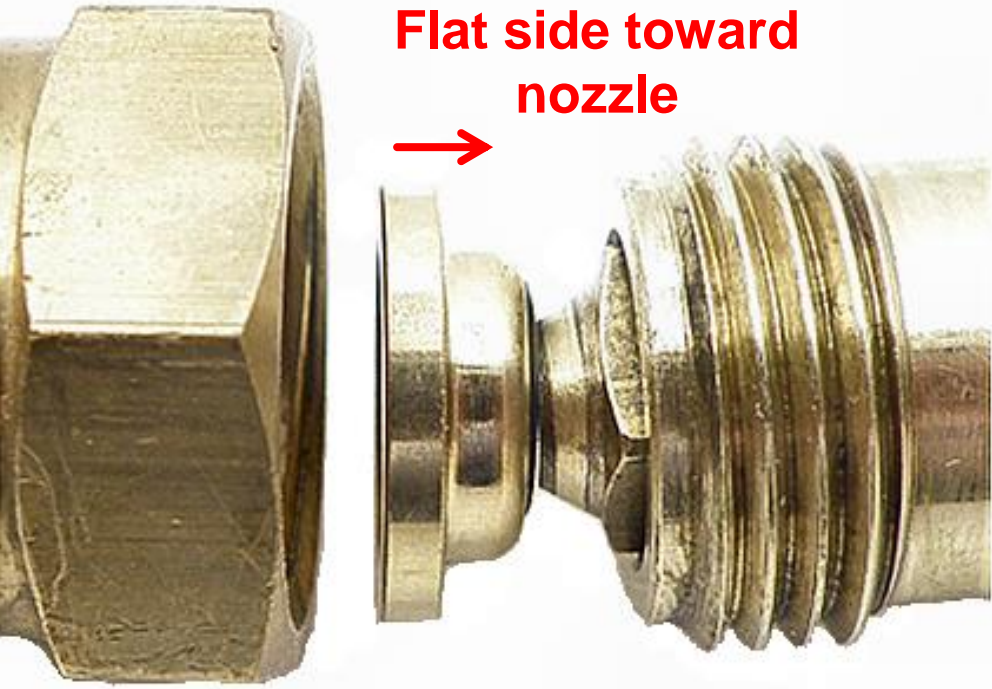


Gasket seals orifice openings in nozzle.
Nozzle leaks without this gasket.



Soft Seat Gasket

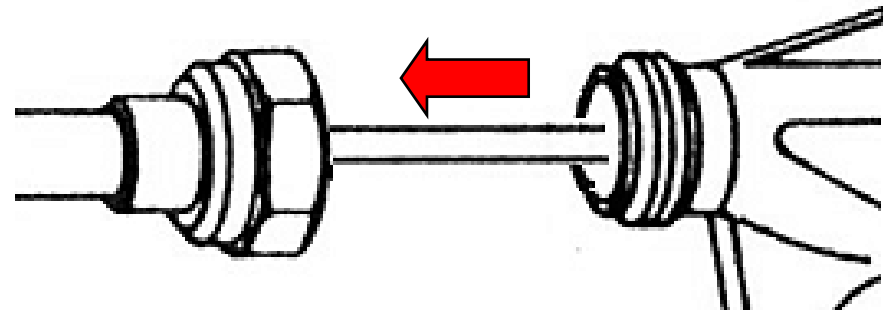
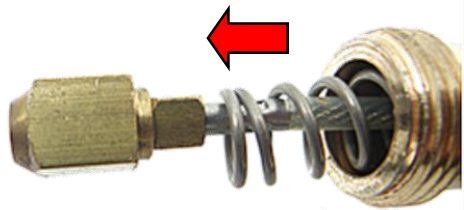
Gasket seals liquid flow to nozzle. **Nozzle leaks when this gasket is dirty or worn.**



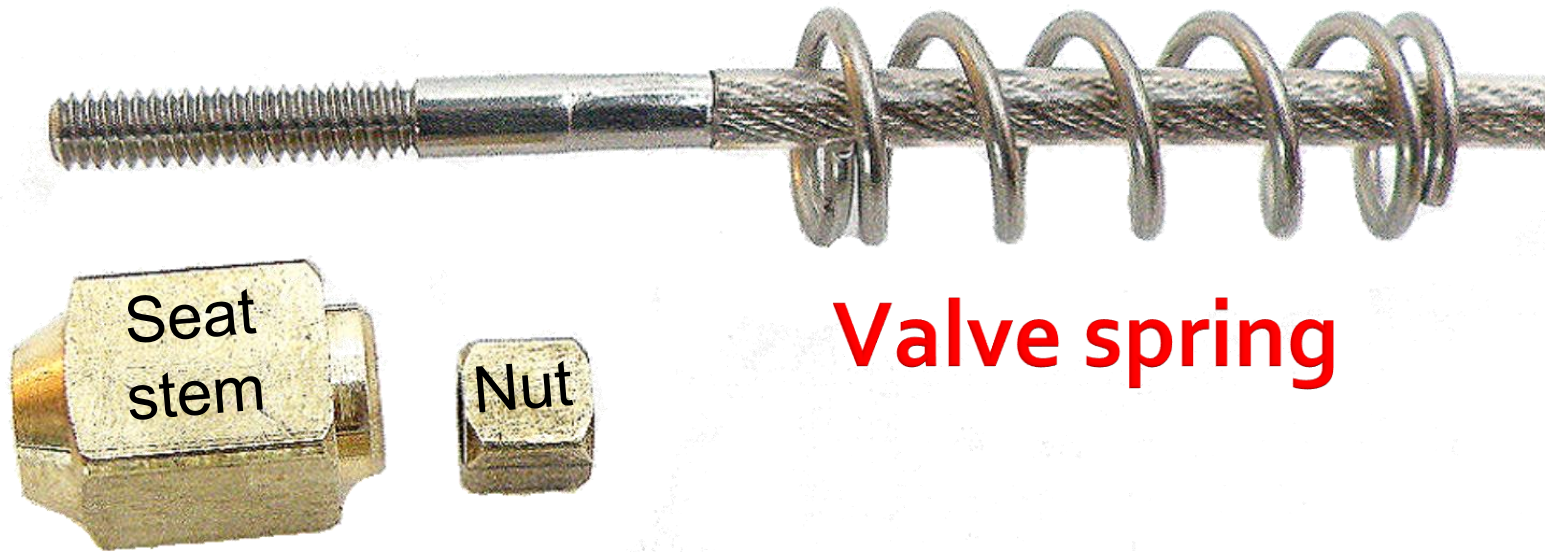
Replacing Valve Spring

Remove valve trigger and disconnect cable. Disconnect extension from valve.

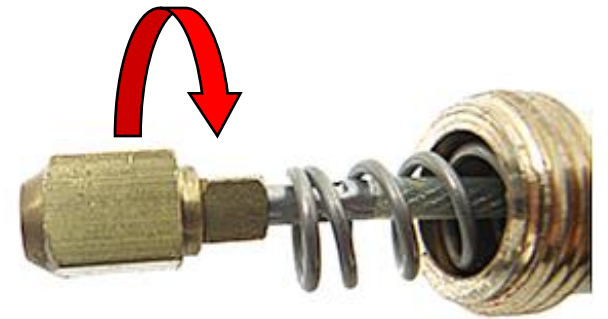
Pull short length of cable from valve to extend cable at nozzle.



Valve Spring

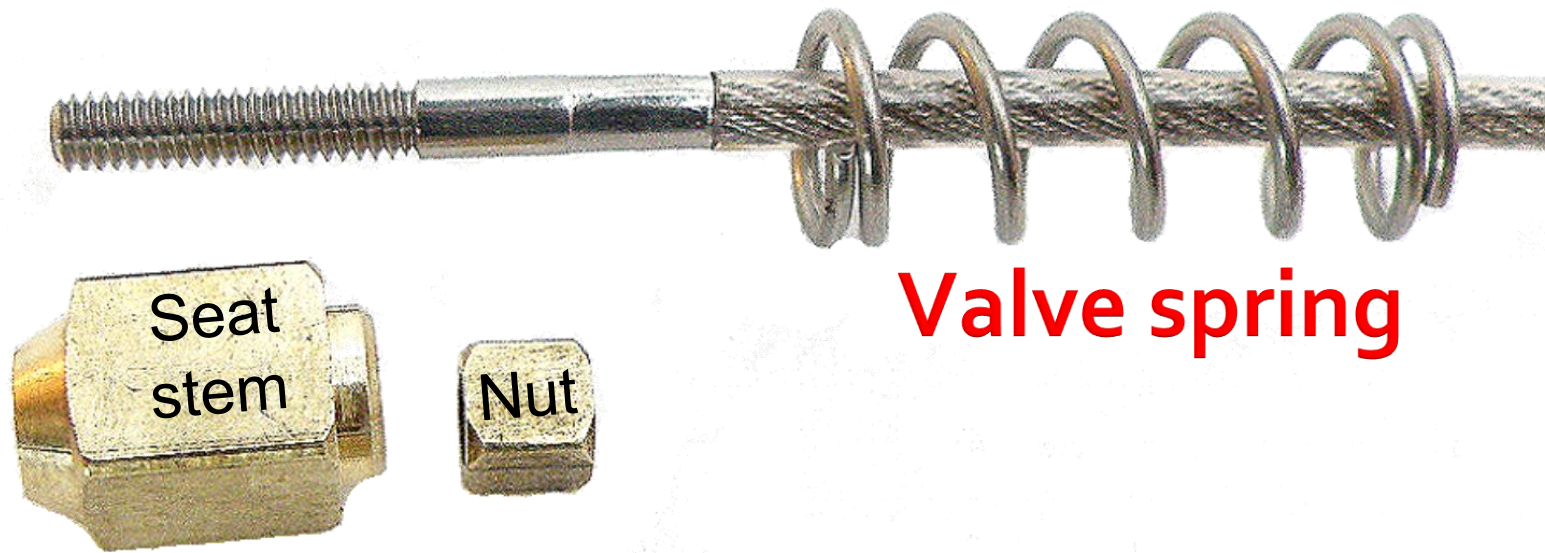


Unscrew / remove seat stem and nut to replace old valve spring.

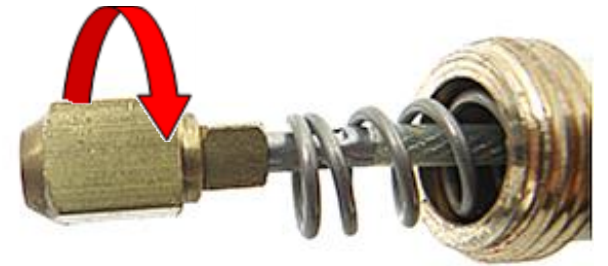


Valve Spring

Unscrew / remove seat stem and nut to replace old valve spring.

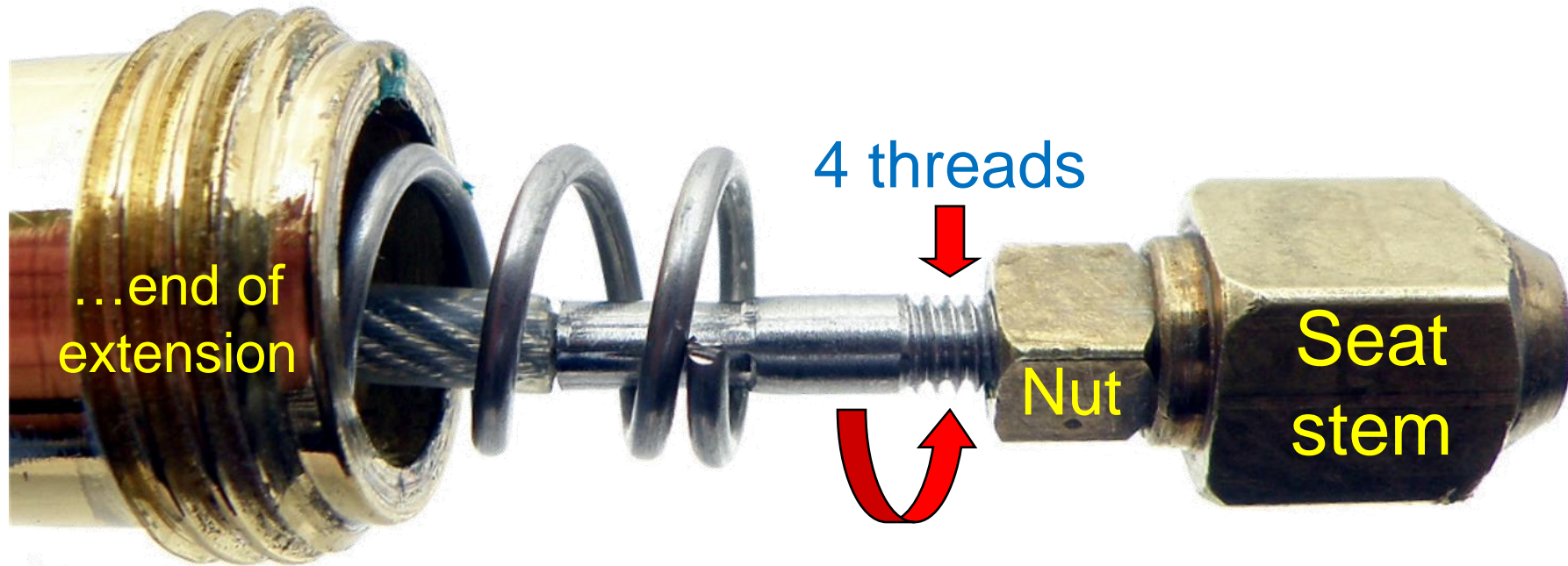


Valve spring



Valve Spring - Finish

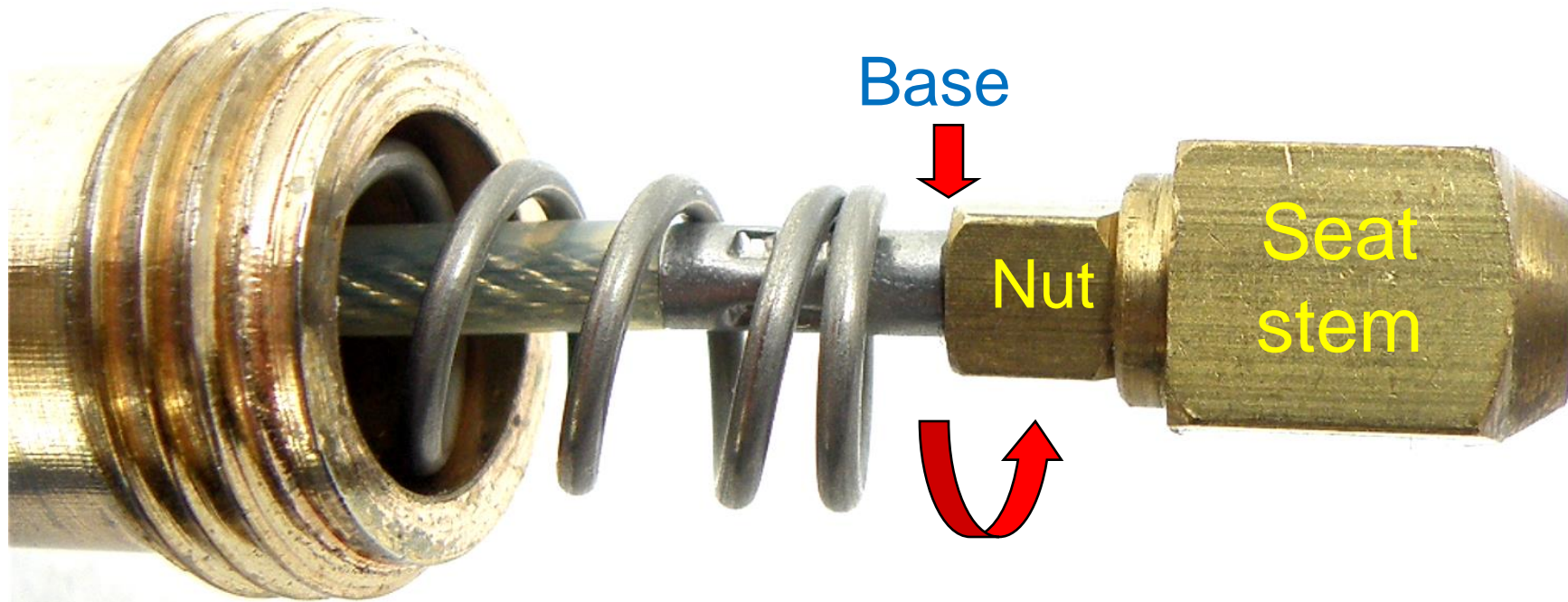
(9 in. Extension)



Screw seat stem nut to **4 threads** from base of cable, then tighten seat stem against nut.

Valve Spring - Finish

(18 in. Extension)

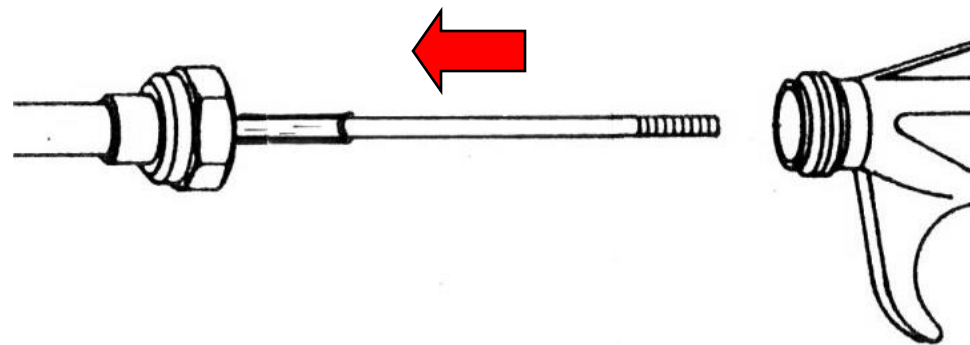
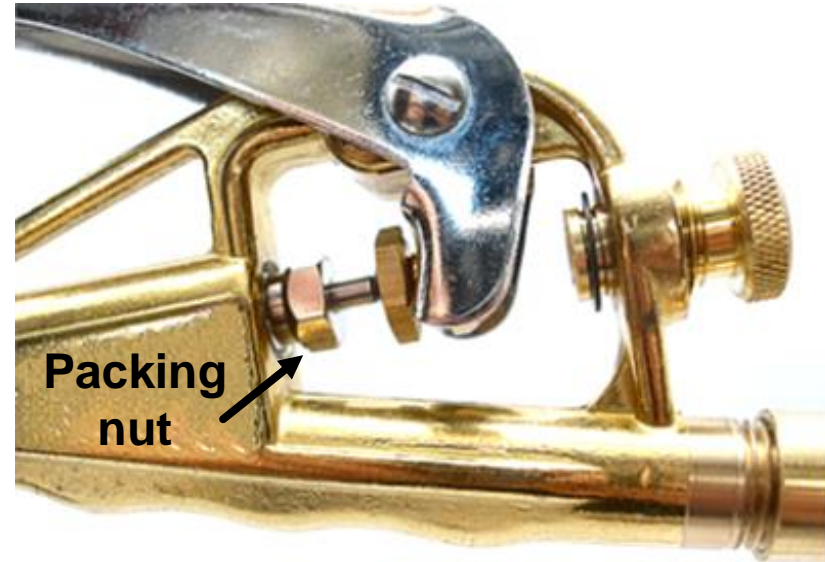


Screw seat stem nut to **base** of cable, then tighten seat stem against nut.

Replace Packing Washers

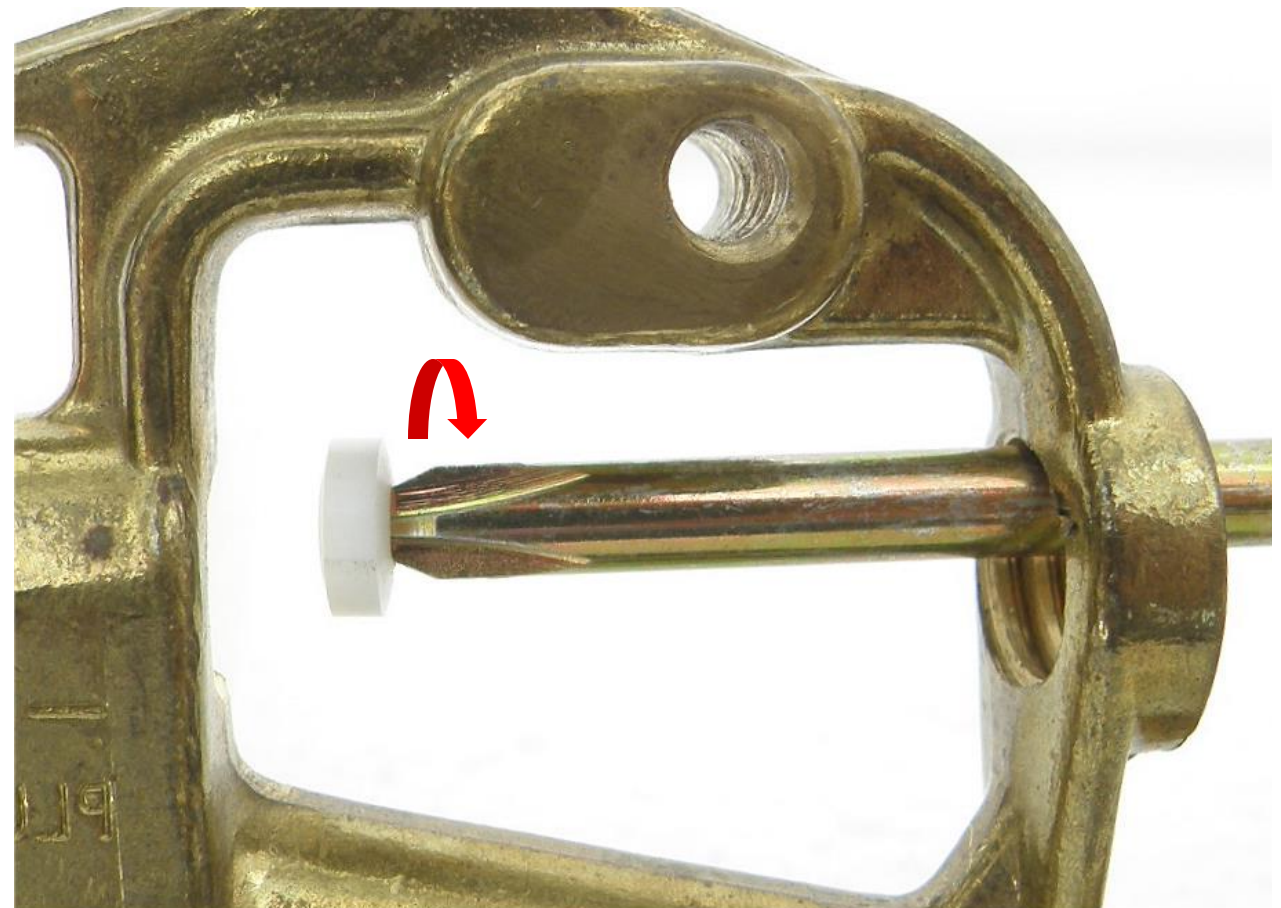
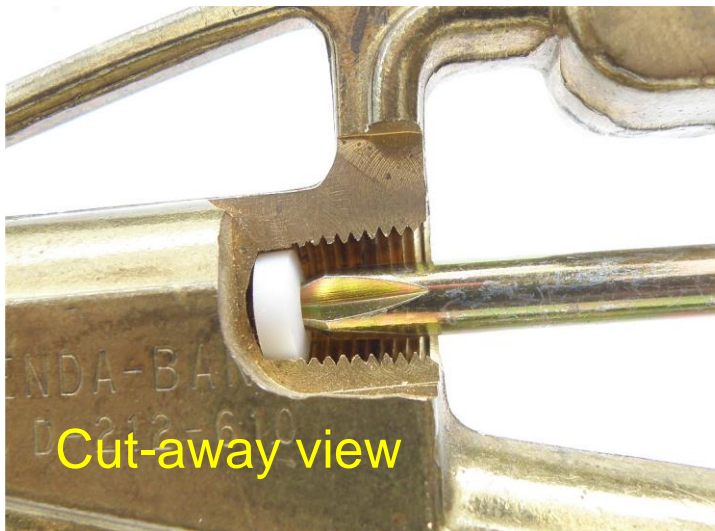
Disassemble the valve, remove Packing nut.

Pull cable from the valve and set aside the extension for re-assembly.



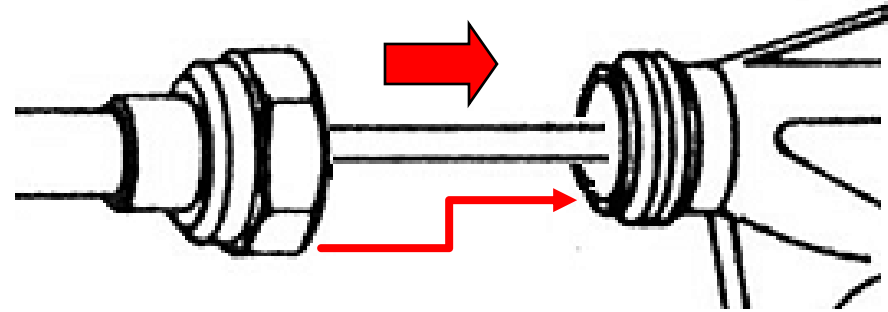
Remove Old Washers

Use flat or Phillips-head screw driver to remove old washers from valve.

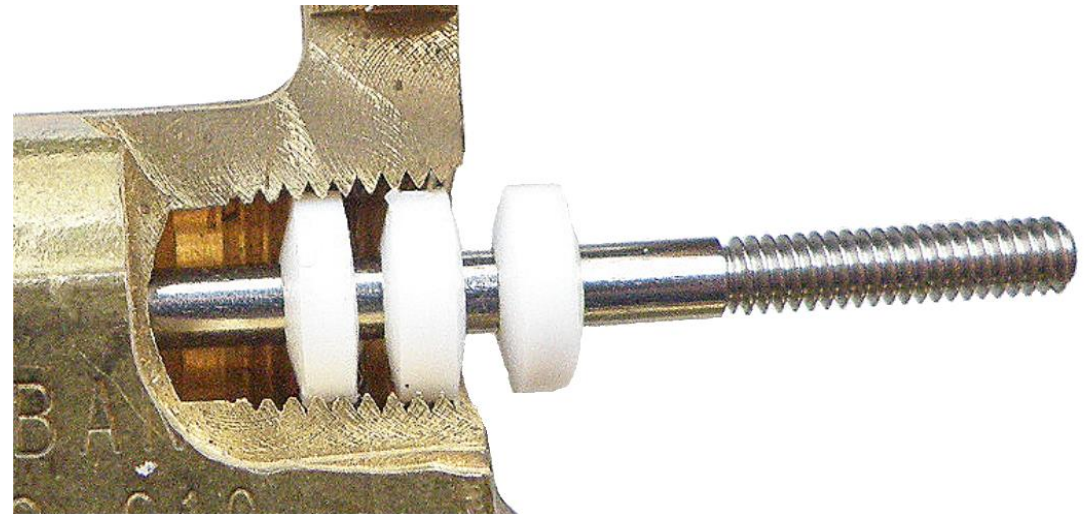


Replace Packing Washers

Push cable back into valve,
re-attach extension to the
valve body.




Place new packing
washers onto the end of
the cable.



Cut-away view

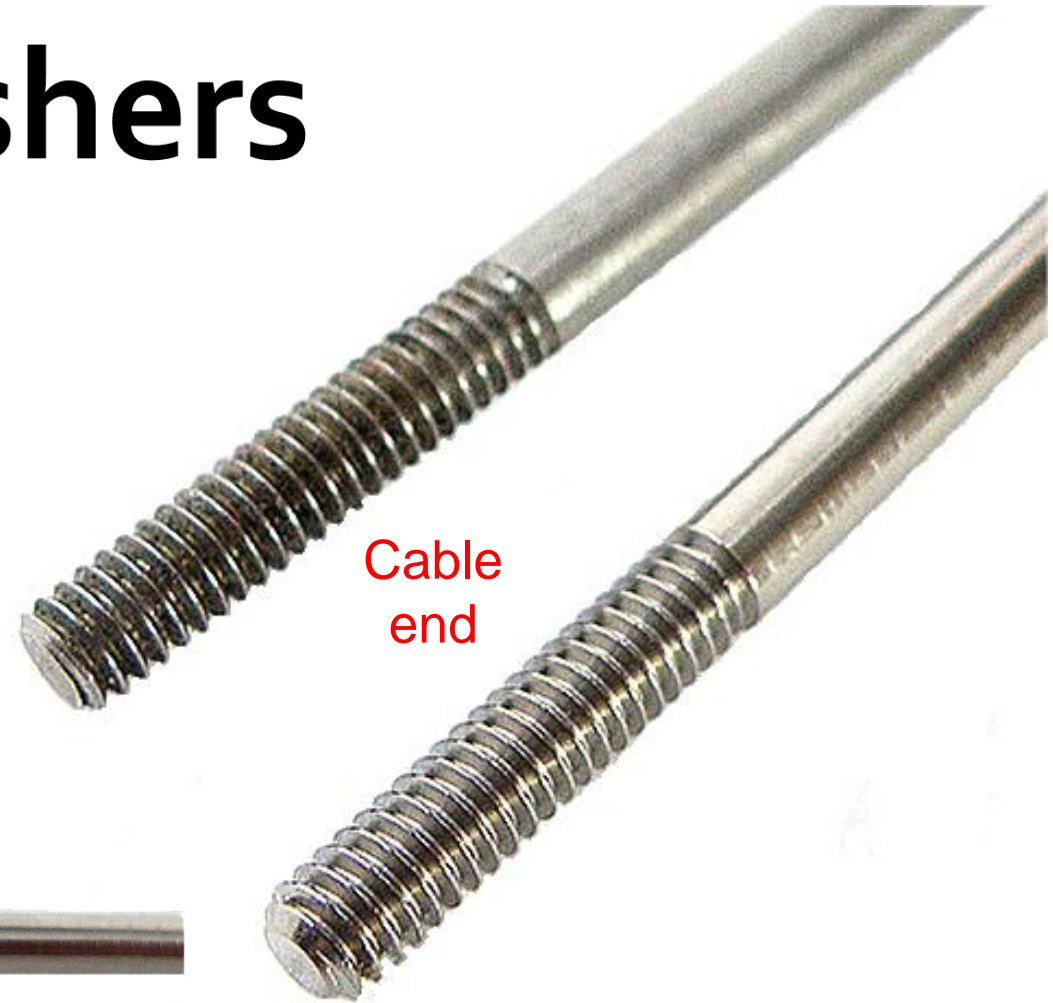
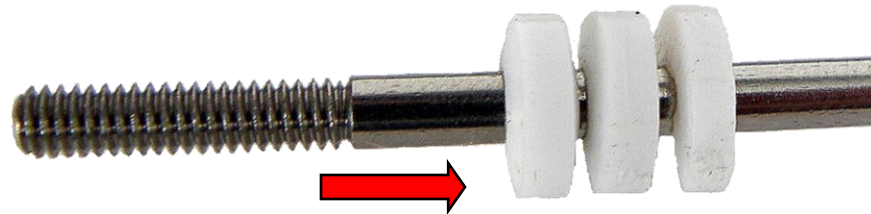
Cables and Washers

 Variability in diameter of cables and center hole of packing washer results in difficulty placing washers on the cable.


Must be screwed onto cable

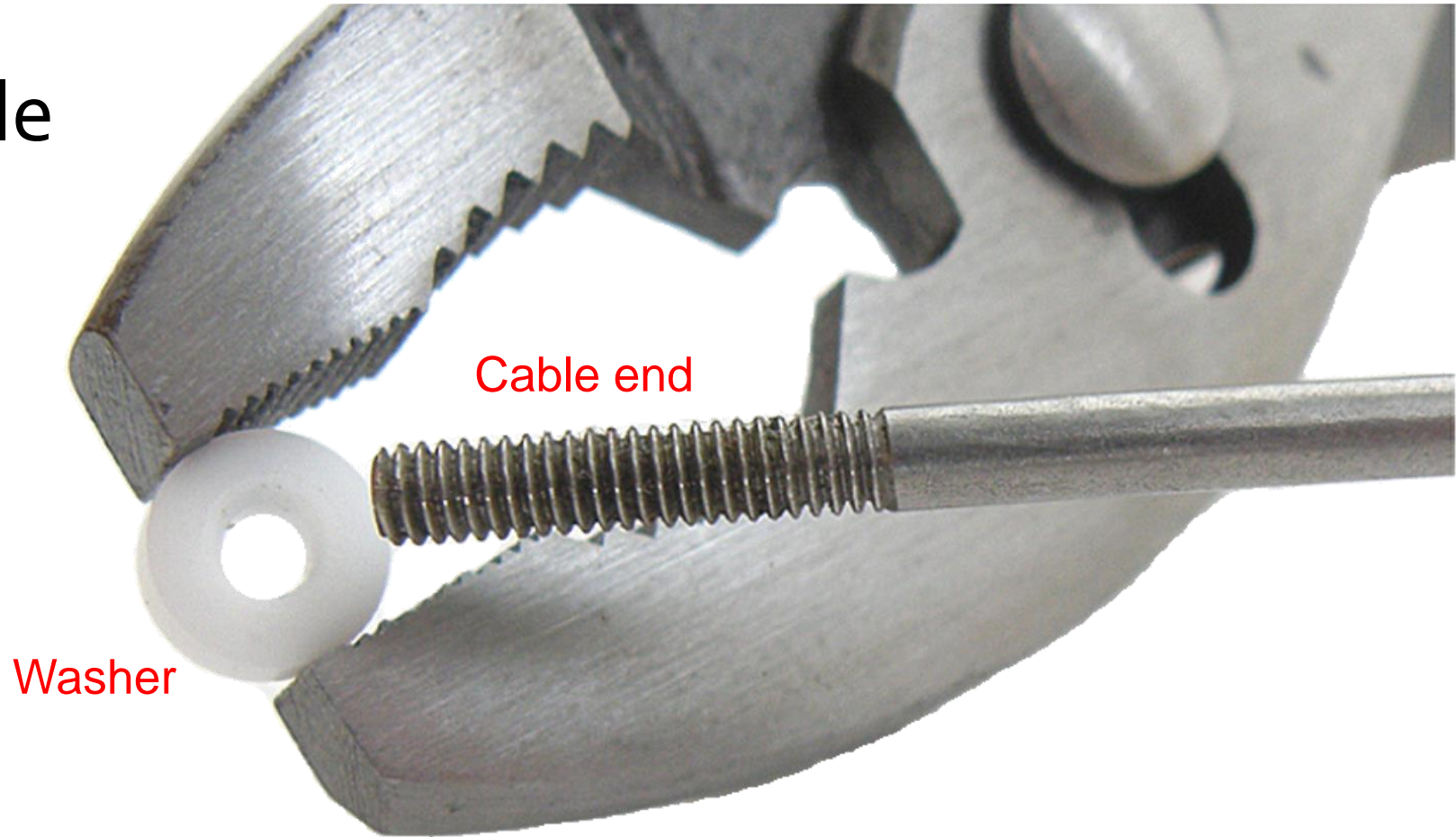


Easy placement



Packing Washer Hole

Enlarge washer hole by moving  end of cable in the hole. Grip washer firmly with pliers.



Packing Washers - Finish

Screw the Packing nut into the valve body only to the top of the threads.



Gasket Repair Kit

#185120

(GD-124 B&G Compatible)



**THE
FOUNTAINHEAD
GROUP**

Craftmanship, Innovation, Commitment

SMITH